

KOENIG & BAUER

Bottom register

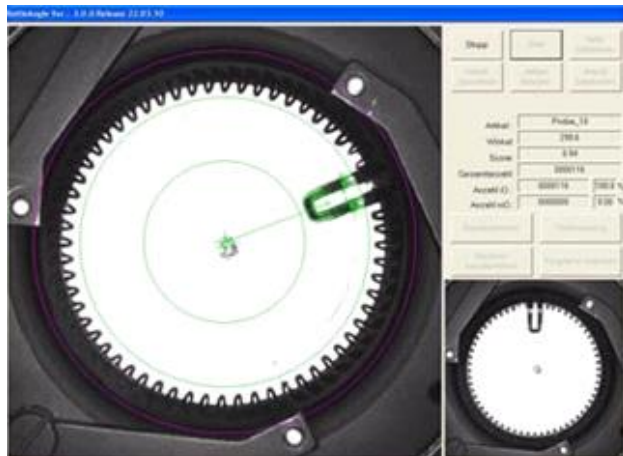
we're on it.

Bottom register

Your **benefits** at a glance:

- reliable recognition of a feature at the article bottom
- costly conventional mechanical registration pins are a thing of the past
- due to contactless working method, the system works wear-free and eliminates the risk of glass breakage
- significantly cost reduction for tooling due to lack of mechanical extra effort in base chuck production. Wear-prone registration pins are no longer needed

- bottles can be positioned contactless by the bottom register system
- the system includes a camera, illumination unit, PC and corresponding software package
- the camera system detects a structure or feature (e. g. register mark or lettering) at the article bottom
- the software determines the angular position of the feature and transmits this value to the machine software which feeds the item to all other processes/stations oriented
- the system is suitable for almost all article forms and materials
- a variety of structures on the article floor can be taught as a register mark to be detected



Characteristics

- in addition to software expansion, mechanical and electrical retrofits are required
- we recommend the retrofitting by one of our qualified service technicians
- as a detailed training in terms of functionality, configuration and operating principle regarding the bottom register camera is necessary

